



TA Approvals

Territorial Authority	Waimakariri District Council TA Certification Division	TA Reference	RC155315 RC155316/151216124711
Survey Number	LT 506073	Survey Purpose	LT Subdivision
Surveyor Reference	150724 GW 2Rds 2&5	Land District	Canterbury
Surveyor	Paul Kevin Durkin		
Surveyor Firm	43below		
Dataset Description	Lots 23 to 53, 62 to 66, 92 to 97, 400 and 501 Being Subdivision of Lot 2 DP 10562 and Part Rural Section 367A		

TA Certificates

I hereby certify that plan LT 506073 was approved by the Waimakariri District Council pursuant to section 223 of the Resource Management Act 1991 on the 25th day of January 2017.

The approval of the Council under Section 223 of the Resource Management Act 1991 is subject to the granting or reserving of the easement(s) set out in the Memorandum of Easements attached as a supporting document to plan LT 506073

Signature

Signed by Yvonne Sally Fear, Authorised Officer, on 25/01/2017 09:41 AM

Receipt Information

Transaction Receipt Number	10488677
Signing Certificate (Distinguished Name)	Fear, Yvonne Sally
Signing Certificate (Serial Number)	1292528606
Signature Date	25/01/2017

*** End of Report ***



Title Plan - LT 506073

Survey Number LT 506073
Surveyor Reference 150724 GW 2Rds 2&5
Surveyor Paul Kevin Durkin
Survey Firm 43below
Surveyor Declaration

Survey Details

Dataset Description Lots 23 to 53, 62 to 66, 92 to 97, 400 and 501 Being Subdivision of Lot 2 DP 10562 and Part Rural Section 367A

Status Initiated

Land District Canterbury **Survey Class** Class A

Submitted Date **Survey Approval Date**
Deposit Date

Territorial Authorities

Waimakariri District

Comprised In

CT CB443/12
CT CB18/79

Created Parcels

Parcels	Parcel Intent	Area	CT Reference
Lot 42 Deposited Plan 506073	Fee Simple Title	0.0702 Ha	765691
Lot 43 Deposited Plan 506073	Fee Simple Title	0.0702 Ha	765692
Lot 44 Deposited Plan 506073	Fee Simple Title	0.0708 Ha	765693
Lot 45 Deposited Plan 506073	Fee Simple Title	0.0804 Ha	765694
Lot 46 Deposited Plan 506073	Fee Simple Title	0.0608 Ha	765695
Lot 47 Deposited Plan 506073	Fee Simple Title	0.0632 Ha	765696
Lot 36 Deposited Plan 506073	Fee Simple Title	0.0739 Ha	765697
Lot 37 Deposited Plan 506073	Fee Simple Title	0.0768 Ha	765698
Lot 38 Deposited Plan 506073	Fee Simple Title	0.0716 Ha	765699
Lot 39 Deposited Plan 506073	Fee Simple Title	0.0722 Ha	765700
Lot 23 Deposited Plan 506073	Fee Simple Title	0.0720 Ha	765701
Lot 24 Deposited Plan 506073	Fee Simple Title	0.0705 Ha	765702
Lot 25 Deposited Plan 506073	Fee Simple Title	0.0705 Ha	765703
Lot 31 Deposited Plan 506073	Fee Simple Title	0.0704 Ha	765704
Lot 32 Deposited Plan 506073	Fee Simple Title	0.0754 Ha	765705
Lot 33 Deposited Plan 506073	Fee Simple Title	0.0702 Ha	765706
Lot 34 Deposited Plan 506073	Fee Simple Title	0.0737 Ha	765707
Lot 35 Deposited Plan 506073	Fee Simple Title	0.0830 Ha	765708
Lot 48 Deposited Plan 506073	Fee Simple Title	0.1732 Ha	765709
Lot 49 Deposited Plan 506073	Fee Simple Title	0.0629 Ha	765710
Lot 50 Deposited Plan 506073	Fee Simple Title	0.0668 Ha	765711
Lot 51 Deposited Plan 506073	Fee Simple Title	0.0825 Ha	765712



Title Plan - LT 506073

Created Parcels

Parcels	Parcel Intent	Area	CT Reference
Lot 52 Deposited Plan 506073	Fee Simple Title	0.0752 Ha	765713
Lot 53 Deposited Plan 506073	Fee Simple Title	0.0736 Ha	765714
Lot 62 Deposited Plan 506073	Fee Simple Title	0.0803 Ha	765715
Lot 63 Deposited Plan 506073	Fee Simple Title	0.0944 Ha	765716
Lot 64 Deposited Plan 506073	Fee Simple Title	0.0784 Ha	765717
Lot 65 Deposited Plan 506073	Fee Simple Title	0.0641 Ha	765718
Lot 66 Deposited Plan 506073	Fee Simple Title	0.0604 Ha	765719
Lot 92 Deposited Plan 506073	Fee Simple Title	0.0902 Ha	765720
Lot 93 Deposited Plan 506073	Fee Simple Title	0.0657 Ha	765721
Lot 94 Deposited Plan 506073	Fee Simple Title	0.0657 Ha	765722
Lot 95 Deposited Plan 506073	Fee Simple Title	0.0842 Ha	765723
Lot 96 Deposited Plan 506073	Fee Simple Title	0.0809 Ha	765724
Lot 97 Deposited Plan 506073	Fee Simple Title	0.0755 Ha	765725
Area G Deposited Plan 506073	Easement		
Area H Deposited Plan 506073	Easement		
Area A Deposited Plan 506073	Easement		
Area B Deposited Plan 506073	Easement		
Area C Deposited Plan 506073	Easement		
Area D Deposited Plan 506073	Easement		
Area J Deposited Plan 506073	Easement		
Area I Deposited Plan 506073	Easement		
Lot 26 Deposited Plan 506073	Fee Simple Title	0.0712 Ha	765726
Lot 27 Deposited Plan 506073	Fee Simple Title	0.0959 Ha	765727
Lot 28 Deposited Plan 506073	Fee Simple Title	0.0912 Ha	765728
Lot 29 Deposited Plan 506073	Fee Simple Title	0.0842 Ha	765729
Lot 30 Deposited Plan 506073	Fee Simple Title	0.0849 Ha	765730
Lot 40 Deposited Plan 506073	Fee Simple Title	0.0830 Ha	765731
Lot 41 Deposited Plan 506073	Fee Simple Title	0.0678 Ha	765732
Area Z Deposited Plan 506073	Easement		
Lot 501 Deposited Plan 506073	Vesting on Deposit for Road	0.9079 Ha	
Lot 400 Deposited Plan 506073	Fee Simple Title	1.6885 Ha	765740
Total Area		5.8444 Ha	



Territorial Authority

**Waimakariri District
Council**

TA Reference: RC155315 RC155316

Plan Number

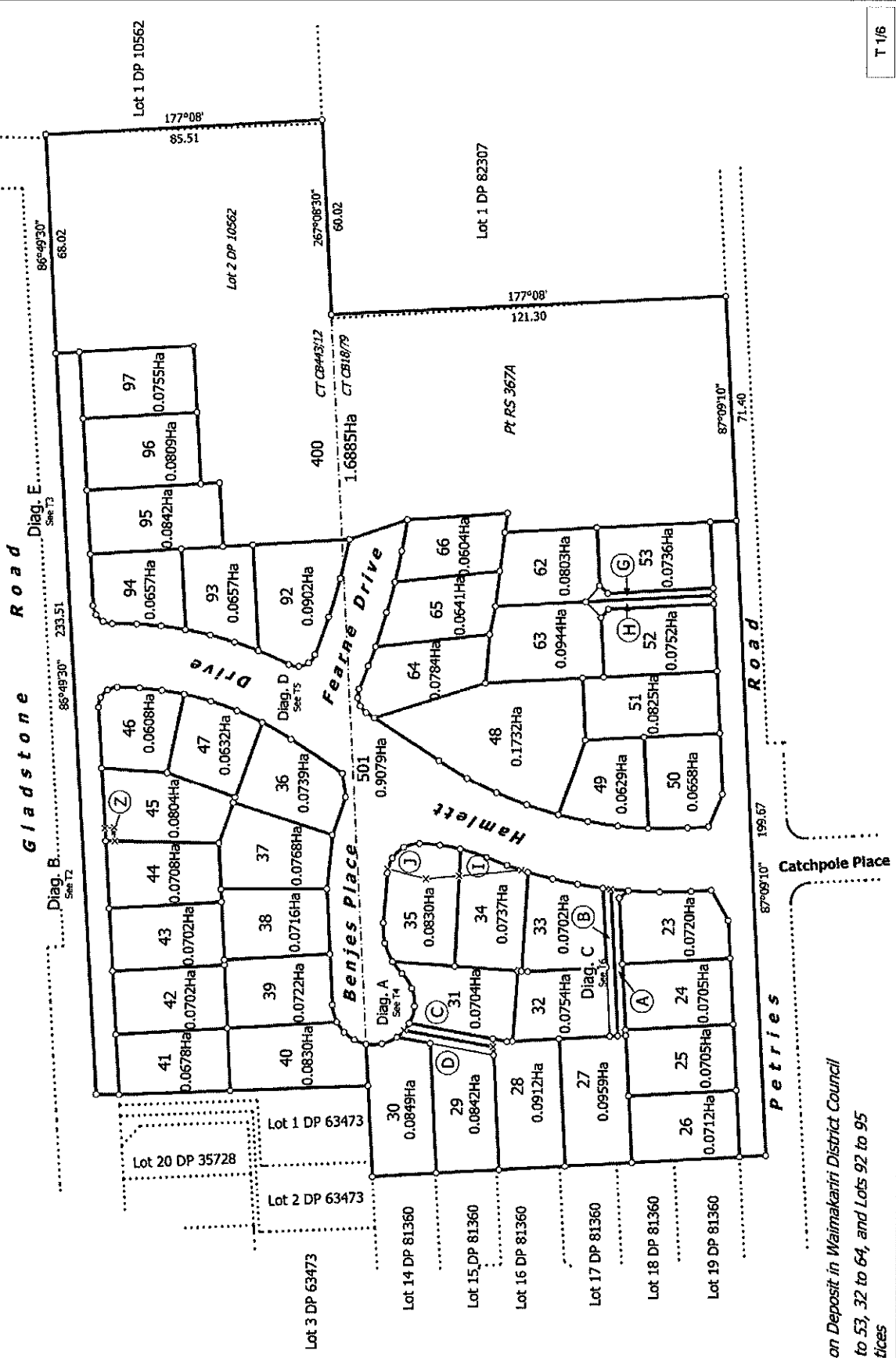
DP 506073

MEMORANDUM OF EASEMENTS IN GROSS

PURPOSE	SERVIENT TENEMENT		GRANTEE
	Shown	Lot No.	
Right to Convey Electricity in Gross	Z	Lot 45	MainPower New Zealand Ltd

MEMORANDUM OF EASEMENTS

PURPOSE	TENEMENT		SHOWN
	SERVIENT	DOMINANT	
Right of Way Right to Drain Water and Sewage Right to Convey Water, Electric Power and Convey Telecommunications and Computer Media	Lot 27	Lot 32	A
	Lot 32	Lot 27	B
	Lot 28	Lot 29	C
	Lot 29	Lot 28	D
	Lot 62	Lot 63	G
	Lot 63	Lot 62	H



T 1/6

Notes:

Lot 501 is to Vest as Road on Deposit in Waimakariri District Council Areas I and J and Lots 23 to 53, 32 to 64, and Lots 92 to 95 are subject to Consent Notices

Land District: Canterbury

Digitally Generated Plan

Generated on: 17/01/2017 9:41pm Page 5 of 10

Lots 23 to 53, 62 to 66, 92 to 97, 400 and 501 Being Subdivision of Lot 2 DP 10562 and Part Rural Section 367A

Surveyor: Paul Kevin Durkin
Firm: 43below

Title Plan
LT 506073
DRAFT



T 5/6

Title Plan
LT 506073
DRAFT

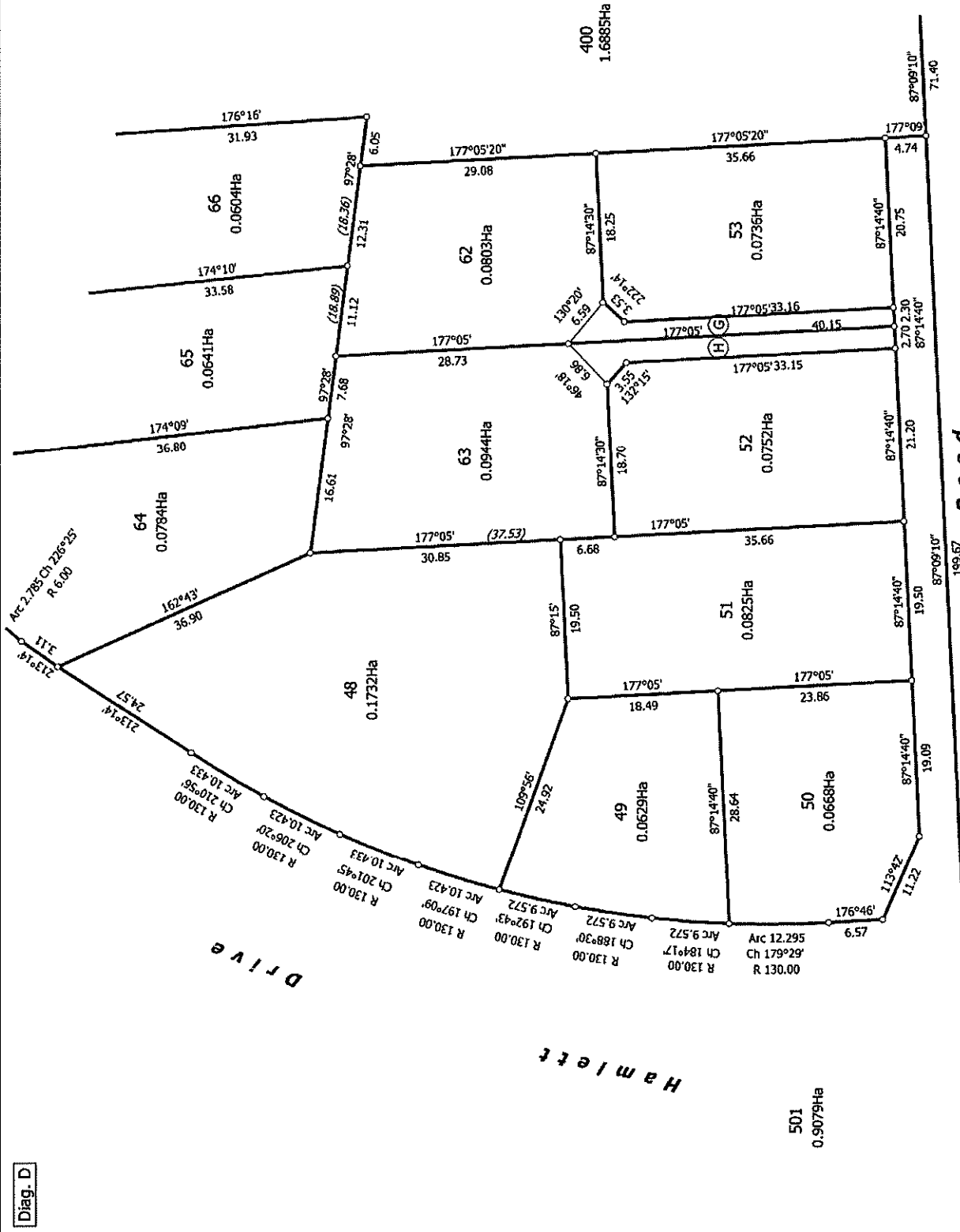
Surveyor: Paul Kevin Durkin
Firm: 43below

Lots 23 to 53, 62 to 66, 92 to 97, 400 and 501 Being Subdivision of Lot 2 DP
10562 and Part Rural Section 367A

Land District: Canterbury

Digitally Generated Plan

Generated on: 17/01/2017 9:41pm Page 9 of 110



Diag. D

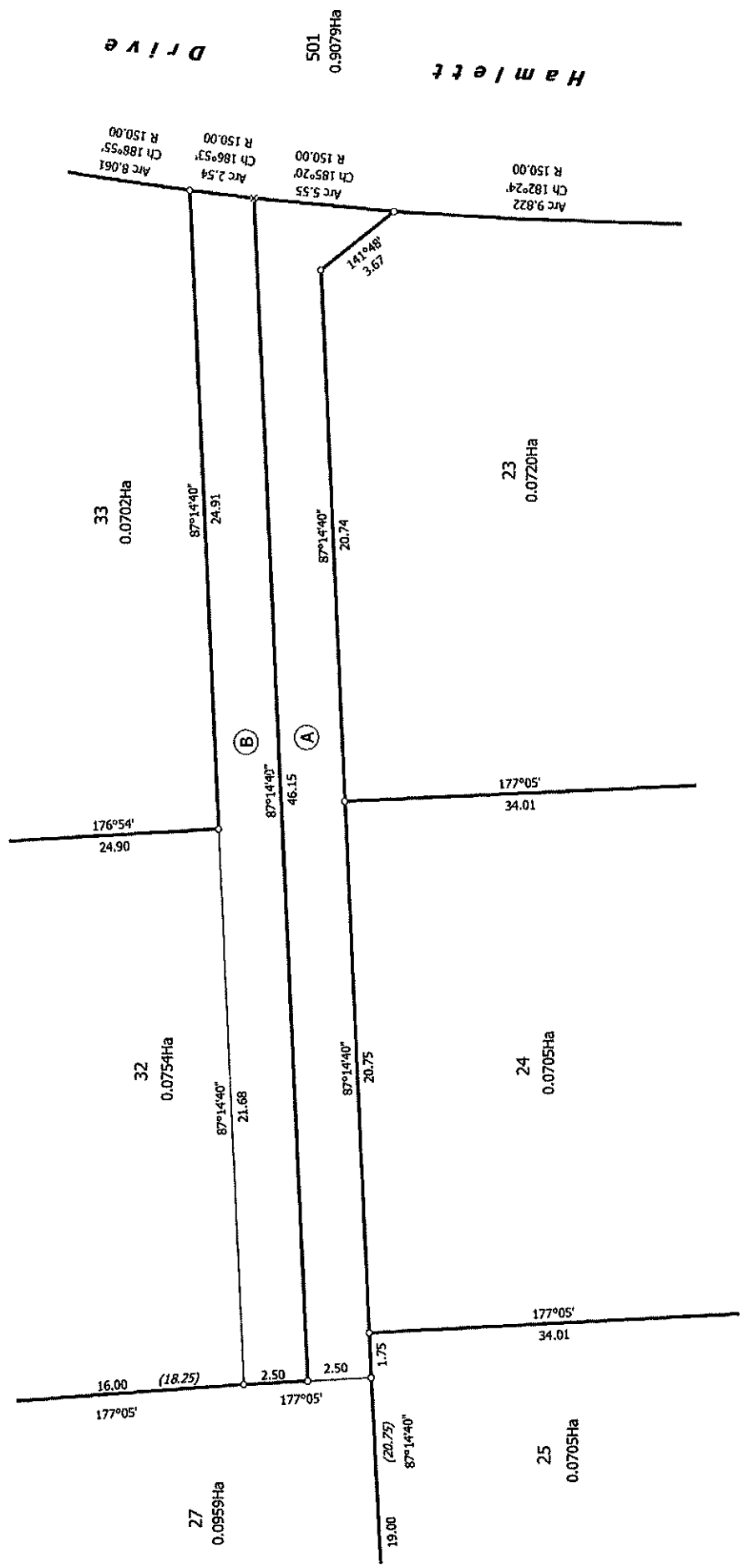
DRIVE

Hamlett

Petries Road



Diag. C



Land District: Canterbury
 Digitally Generated Plan
 Generated on: 17/07/2017 9:41pm Page 10 of 10

Surveyor: Paul Kevin Durkin
 Firm: 43below

Lots 23 to 53, 62 to 66, 92 to 97, 400 and 501 Being Subdivision of Lot 2 DP
 10562 and Part Rural Section 367A

Title Plan
 LT 506073
 DRAFT